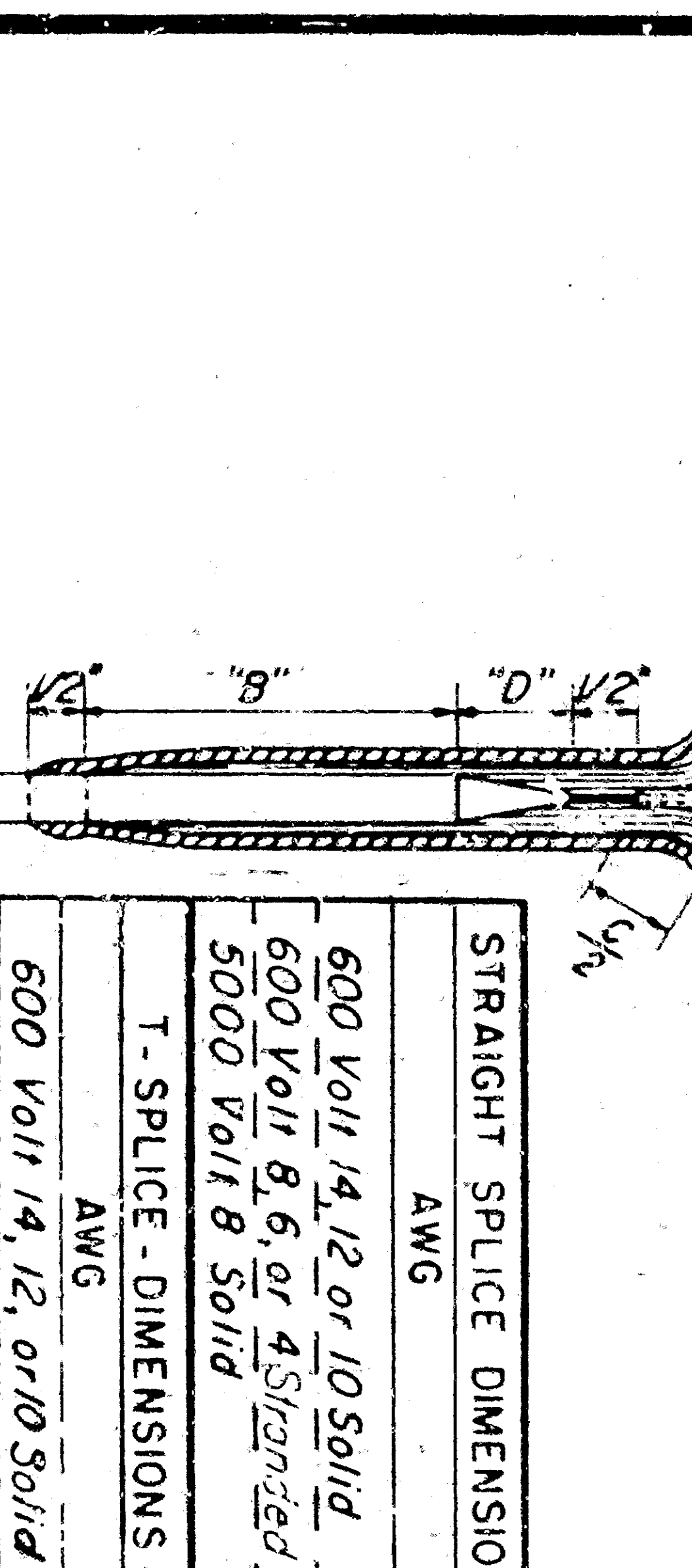


STRAIGHT SPLICE (600 V or 5000 V)

Use 4-wire pressure sleeve connector with branch removed.



ALTERNATE 600 VOLT "T" SPLICE ELECTRICAL SPRING CONNECTOR

PROCEDURE
 A Remove insulation from conductor for distance of Spacing distance.
 B Train conductors and screw right spring connector.
 C Insulation - (See Splice at left) use Method "X" unless otherwise specified.

STRAIGHT SPLICE DIMENSIONS - Inches

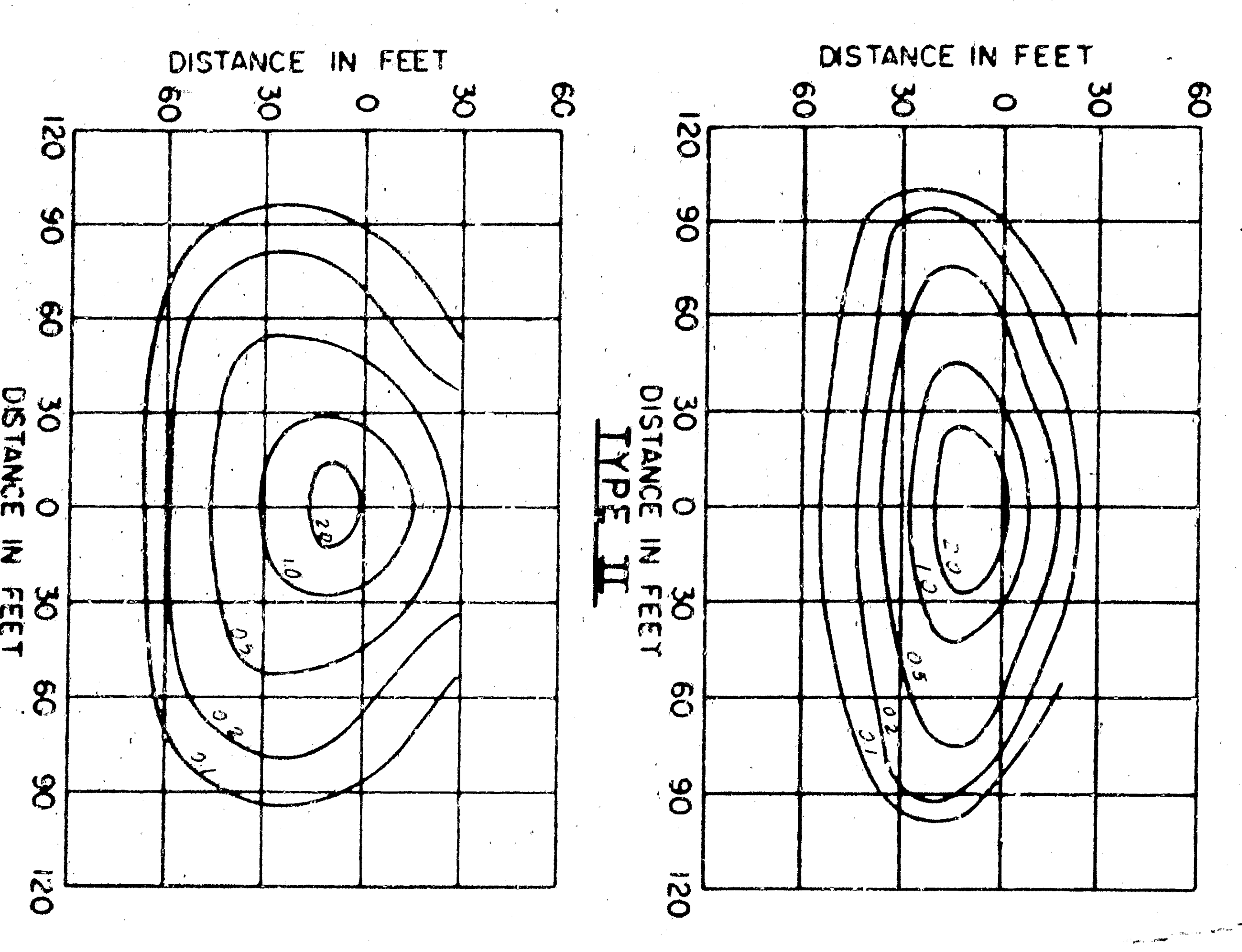
AWG	"B"	"C"	"D"
600 Volt 14, 12 or 10 Solid	2"	1 1/2"	1 1/2"
600 Volt 8, 6 or 4 Stranded	2 1/2"	1 1/2"	1 1/2"
5000 Volt 8 Solid	3 1/4"	1 1/2"	1 1/2"

T-SPLICE - DIMENSIONS - Inches

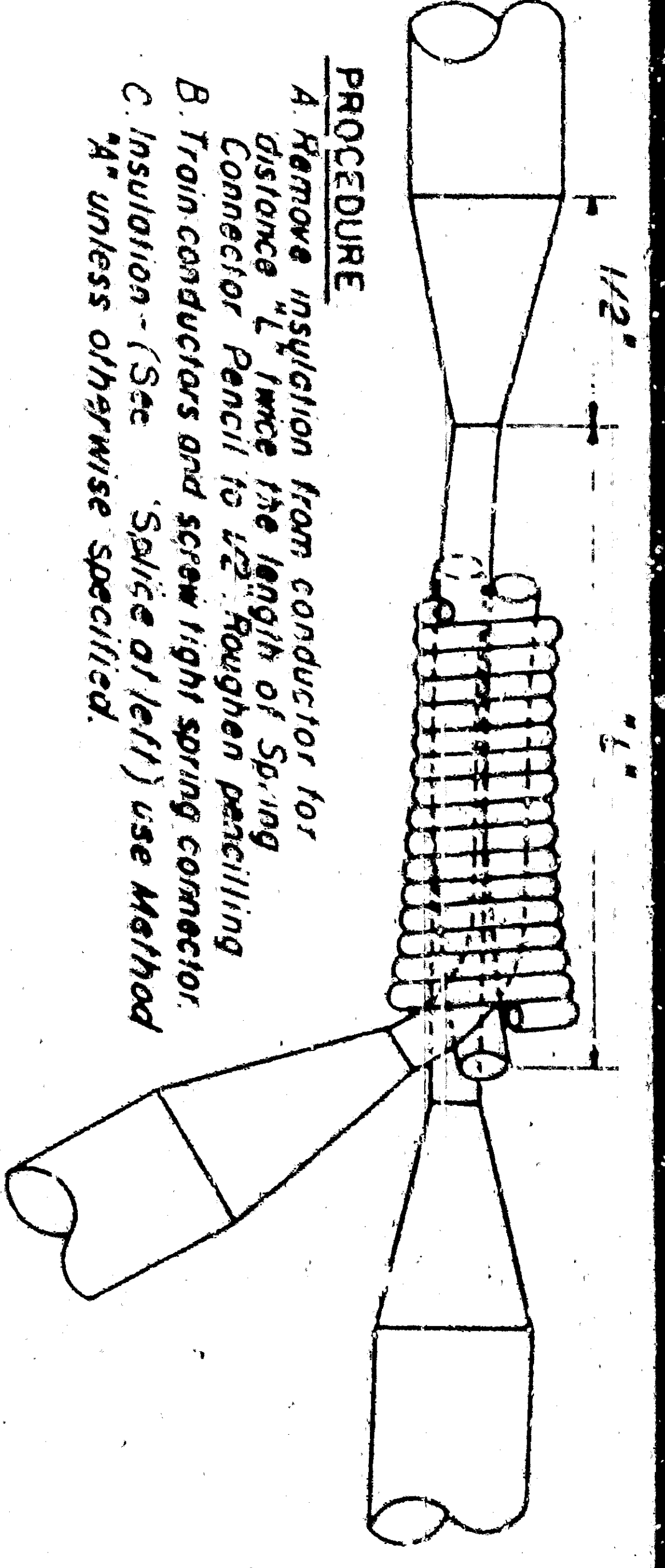
AWG	"B"	"C"	"D"
600 Volt 14, 12, or 10 Solid	2"	1 1/2"	1 1/2"

600 VOLT "T" SPLICE
(Up to 10 AWG only)

PROCEDURE
 A Remove insulation from each conductor to distance 1/2 C+1/2" and pencil to dimension D. Roughen pencil.
 B Train conductors and place connector, centering over burred cable ends.
 C Crimp and solder connector.
 D Insulate according to Method "A" unless otherwise specified.



ISOLUX LINES OF MINIMUM HORIZONTAL FOOT CANDLES
 Shading Highway Lighting Luminaires 30' Mounting Height, 20,000 lumens, Mercury Vapor Lamp

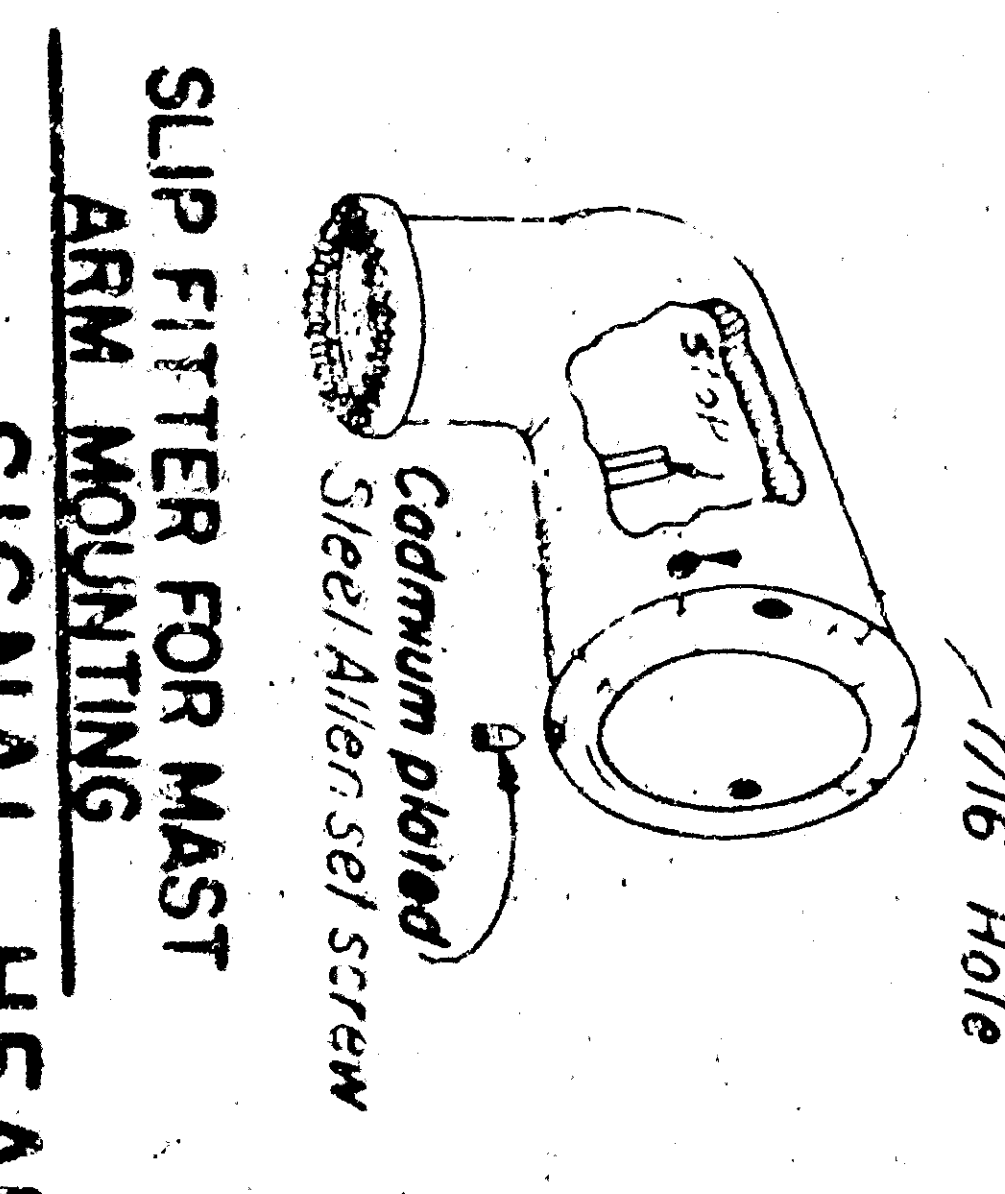
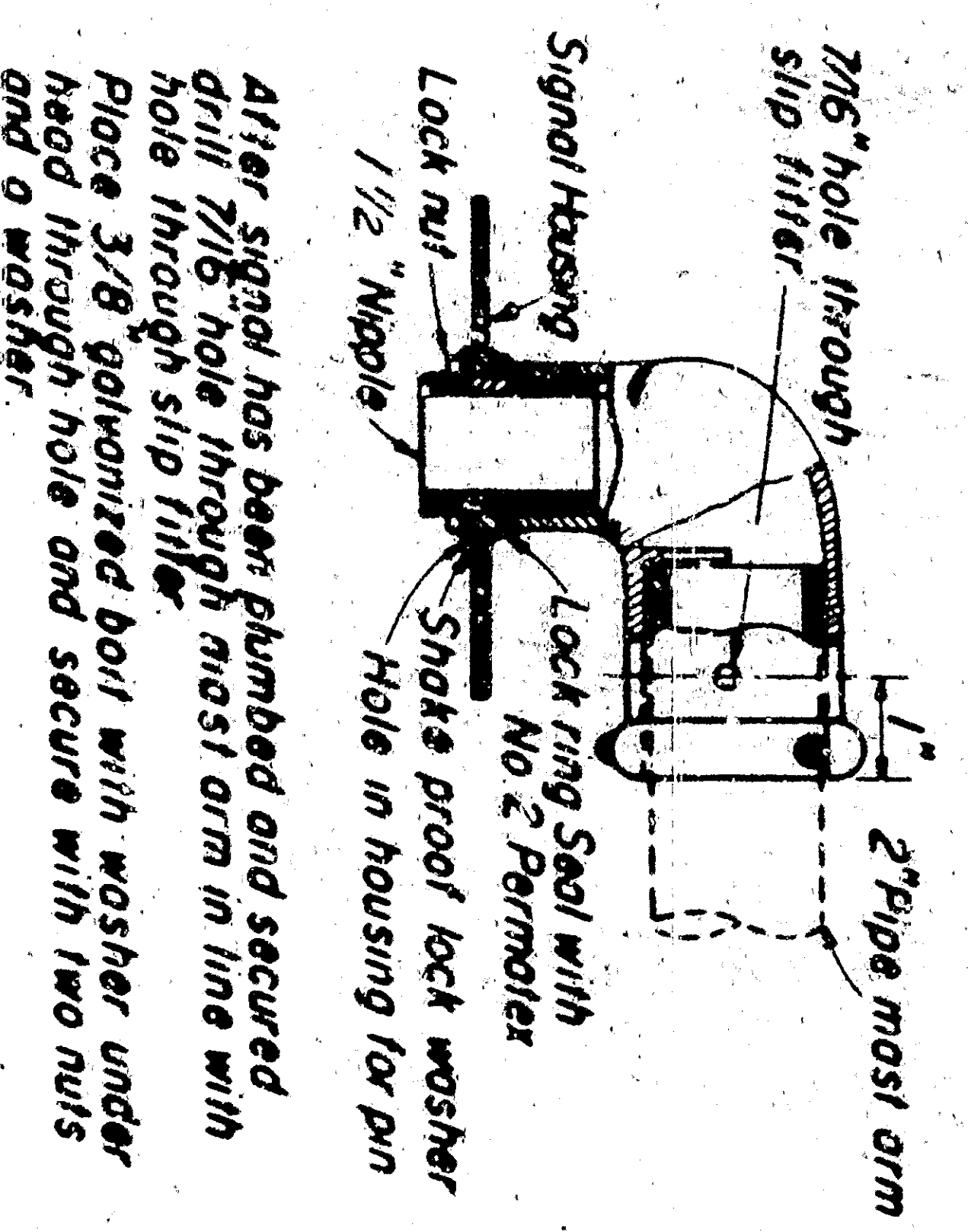
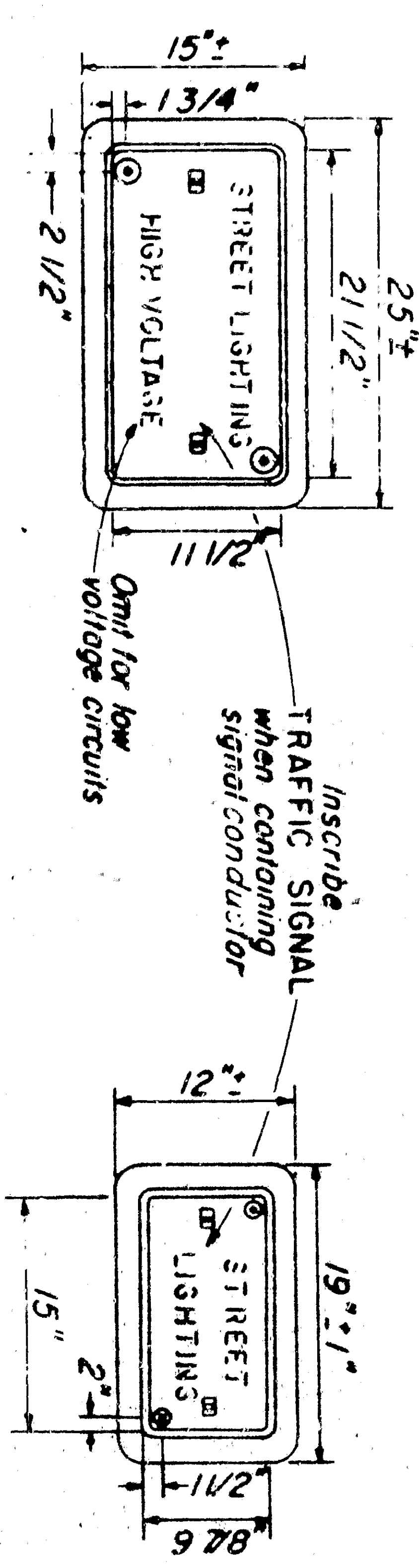


ALTERNATE 600 VOLT "T" SPLICE ELECTRICAL SPRING CONNECTOR

INSULATING METHOD "X"
 No. 14 AWG and larger

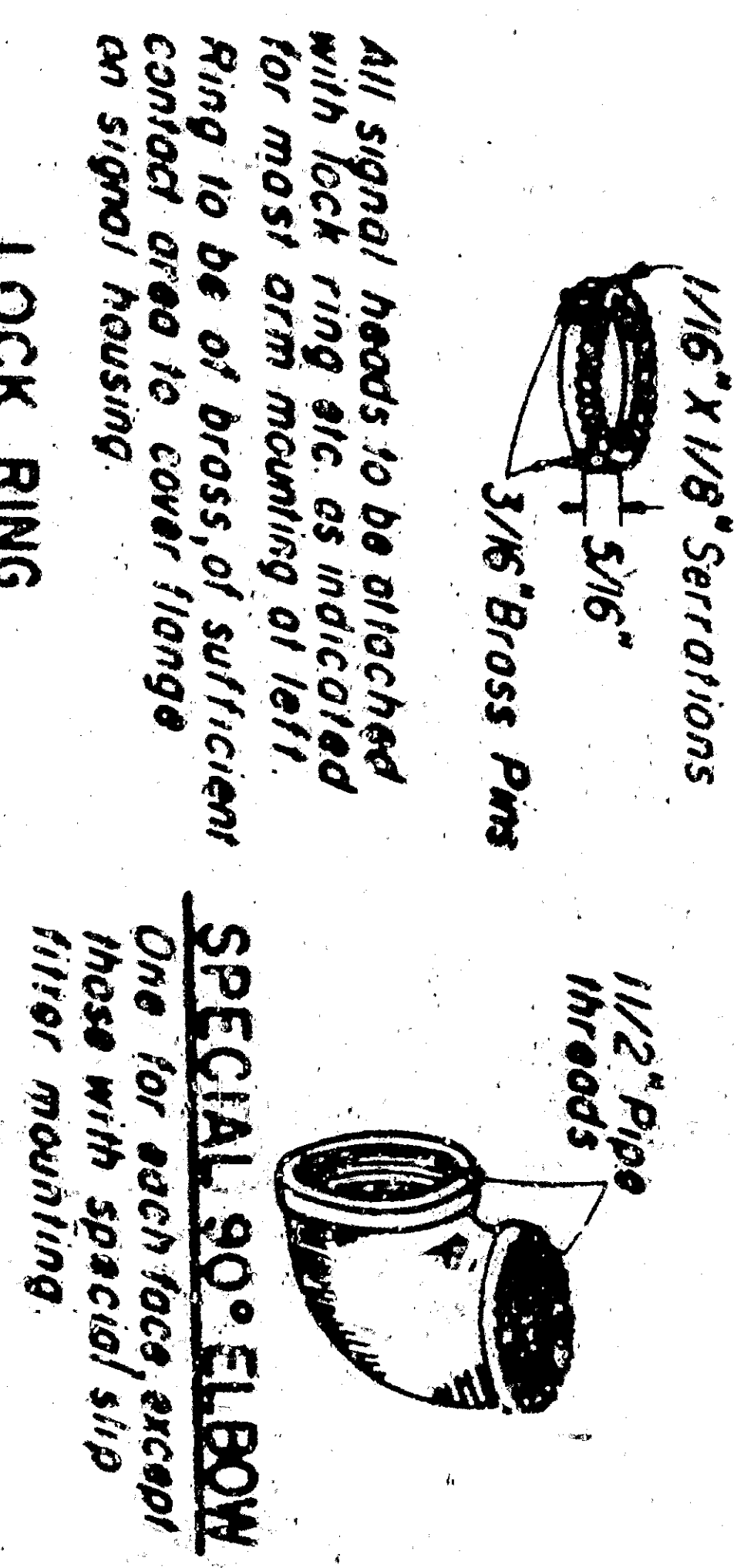
- Apply one coat of tape over rubber cement, allow to dry.
 - For Circuits Up to 2000 Volts
Apply self-healing synthetic rubber tape 1/2" thickness equal to original insulation.
 - For Circuits Above 2000 Volts 40-60 mil. synthetic self-healing synthetic rubber tape 1/2" thickness equal to original insulation.
 - Apply two layers of self-healing synthetic rubber tape, half lapped, outer tapes shall be rolled, after application, with convex roller.
- INSULATING METHOD "B"**
 Apply two layers of self-healing synthetic self-healing rubber tape. Apply 3/32" thick P.V.C. tape to thickness equal to original insulation. Apply two layers of asphalt-impregnated green meshed fabric tape. Coat splice with same compound as in tape and use in.

SPLICING DETAILS

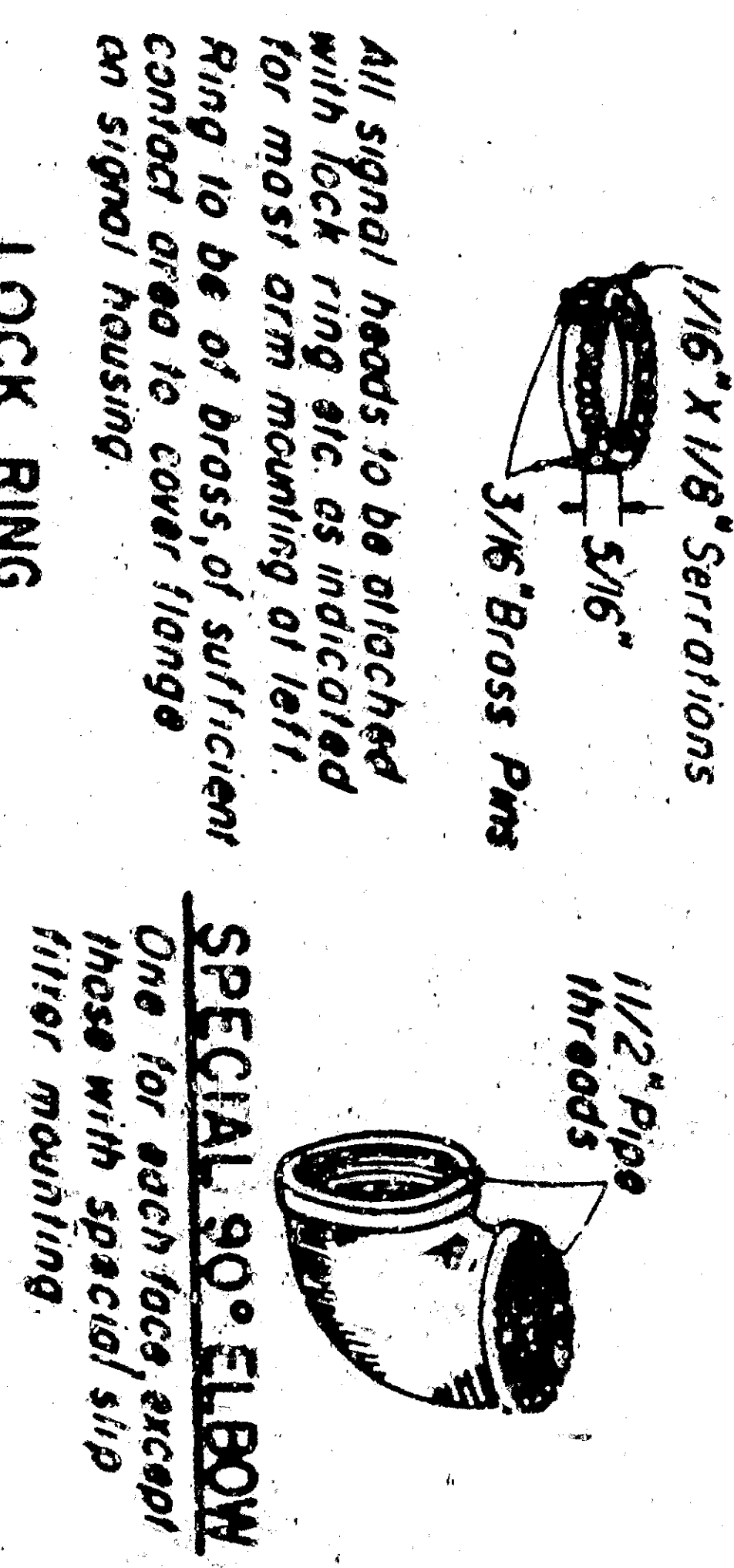


SLIP FITTER FOR MAST ARM MOUNTING

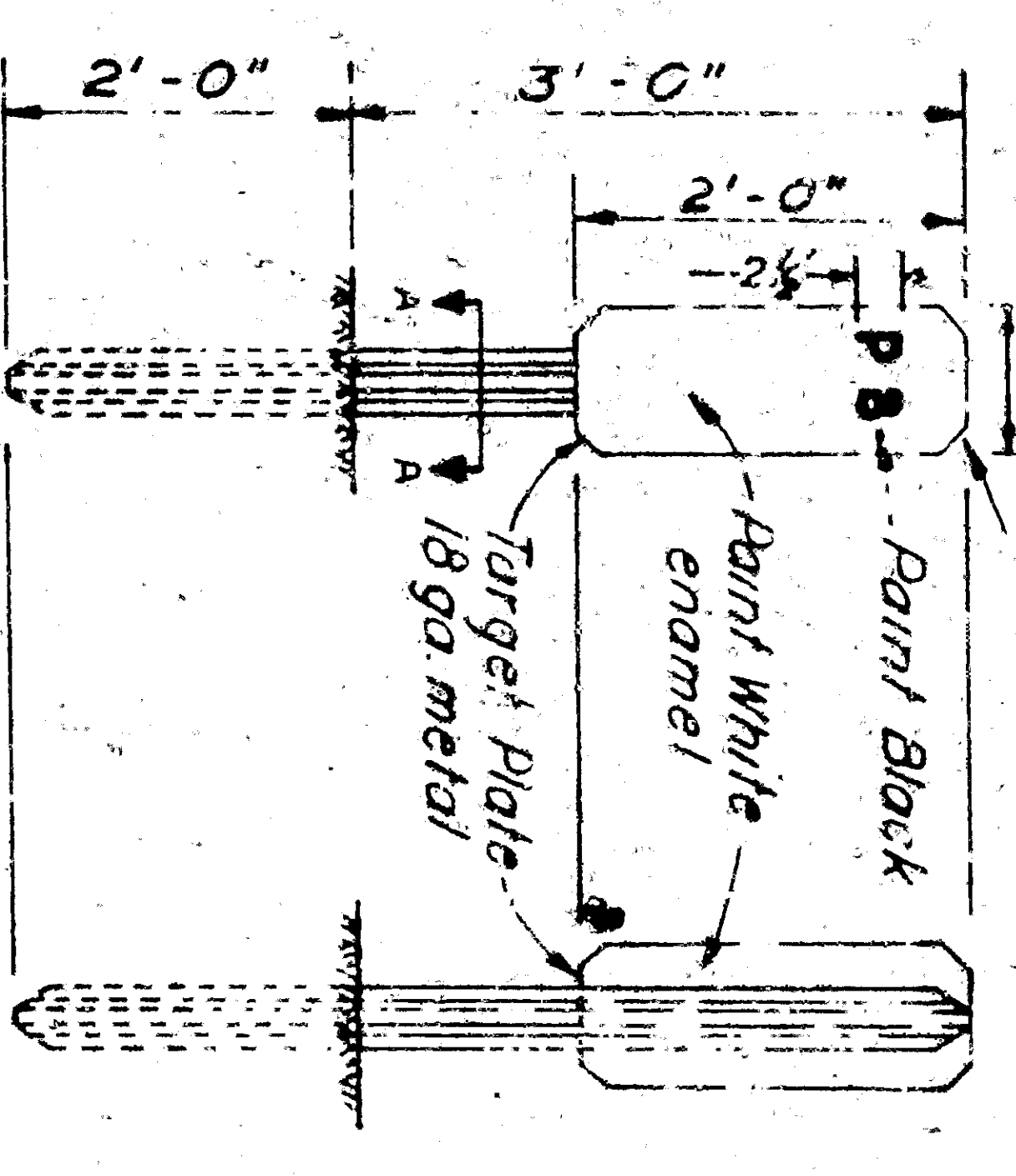
LOCK RING ATTACHMENT DETAILS



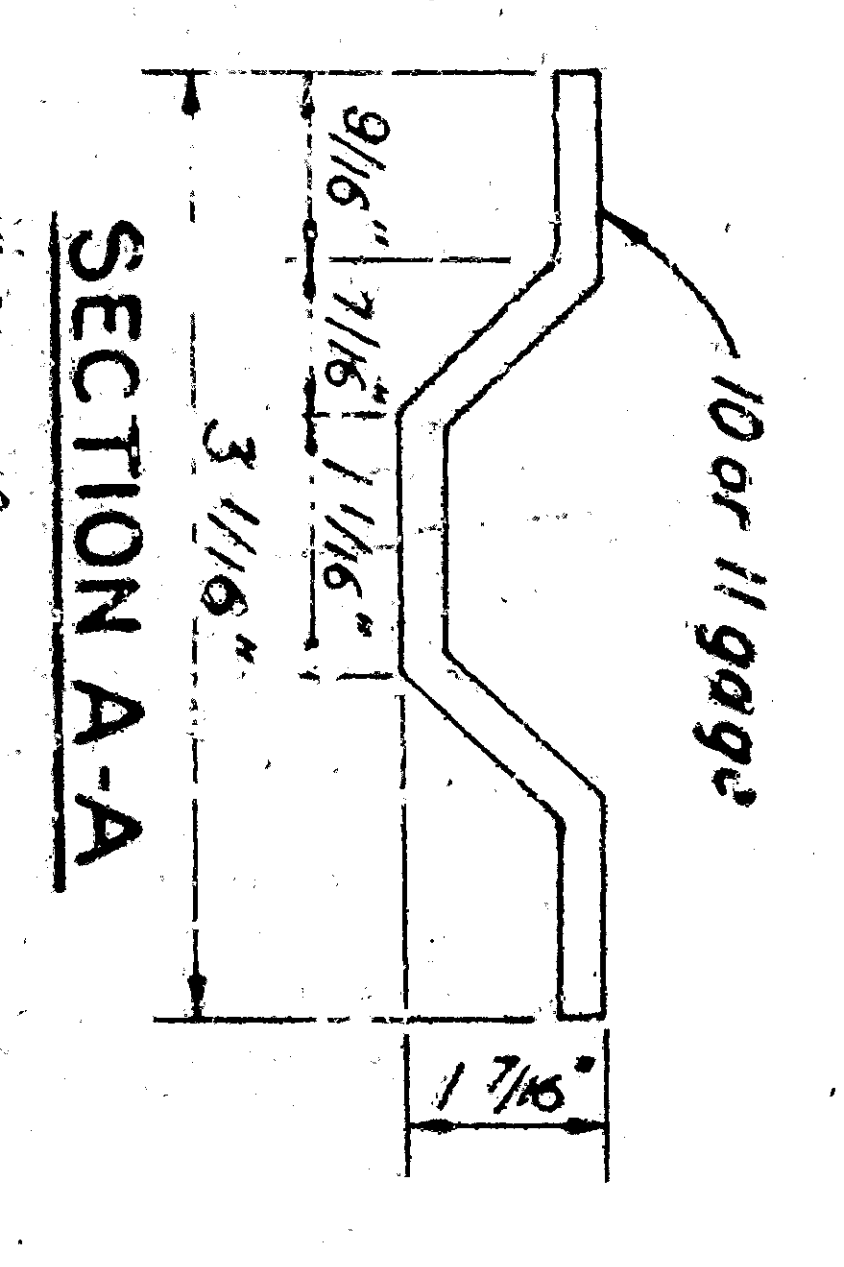
SLIP FITTER FOR POST TOP MOUNTING



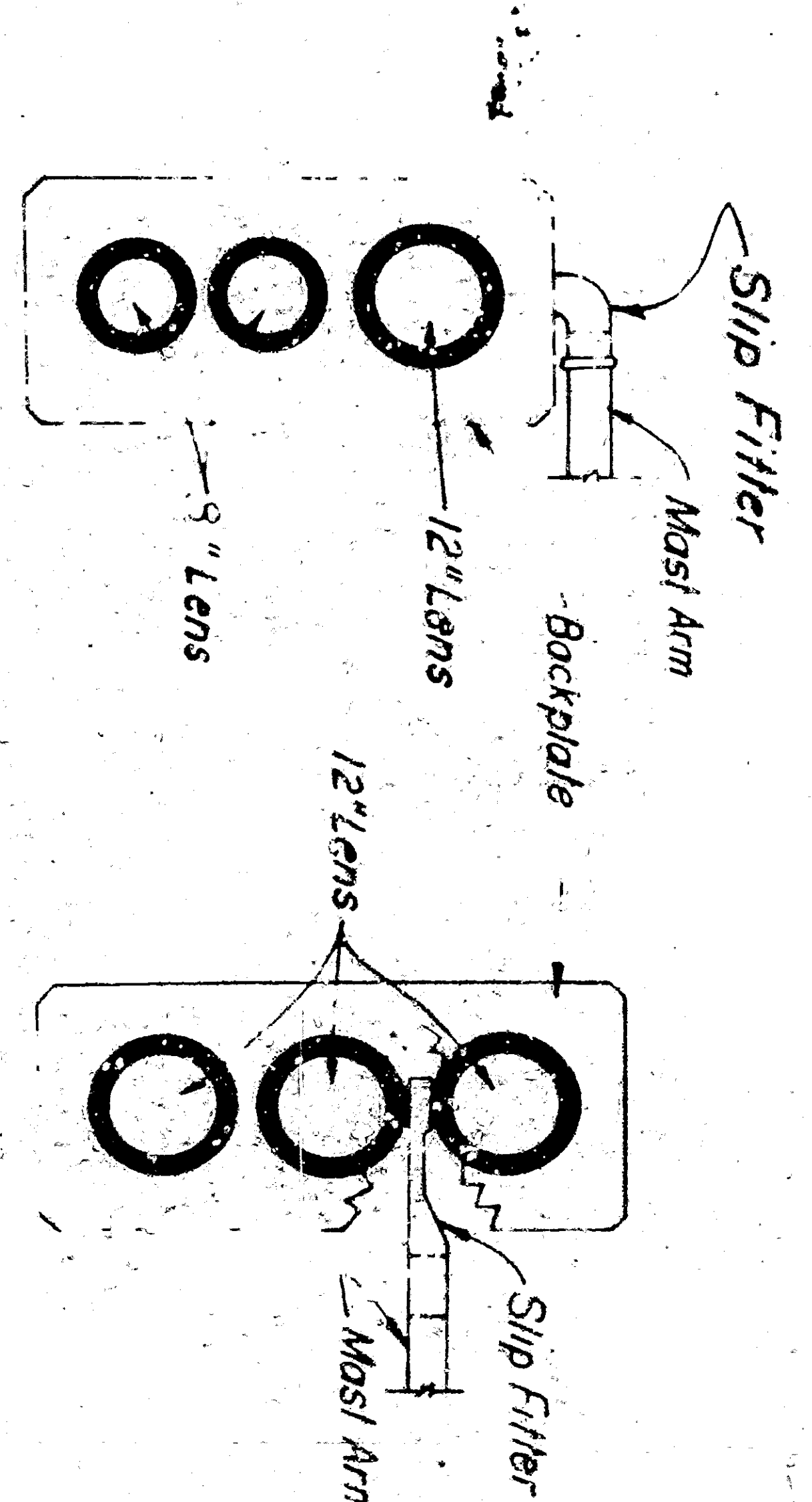
SLIP FITTER FOR POST TOP MOUNTING



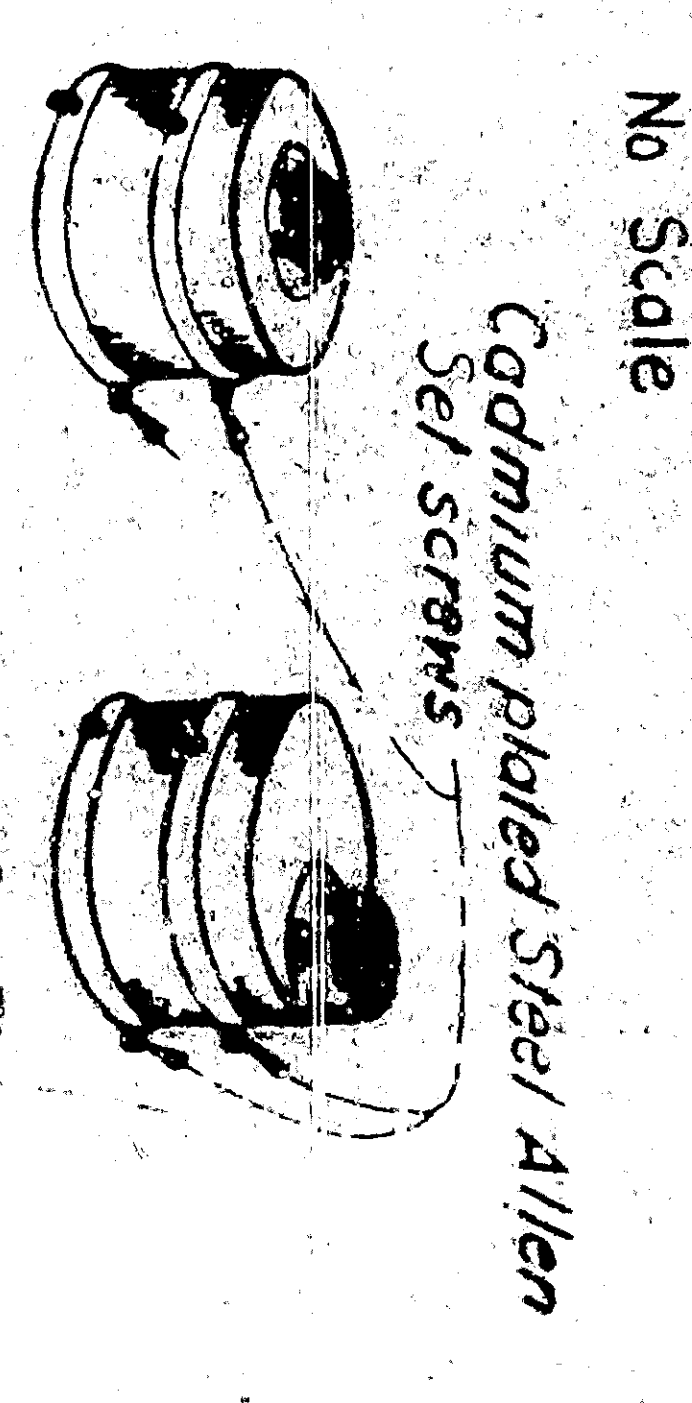
PULL BOX MARKER
 (Type A Guide Post - No Reflectors)
 No Scale



SECTION A-A



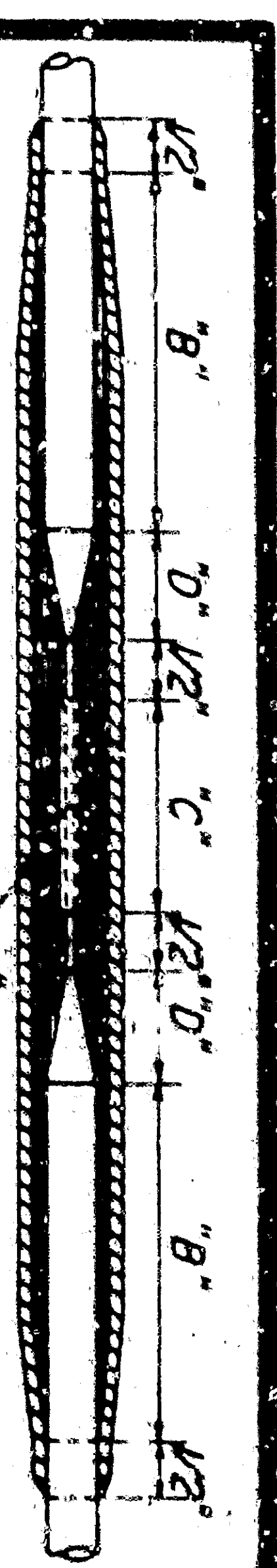
MAST ARM MOUNTING
 No Scale



SLIP FITTER FOR POST TOP MOUNTING

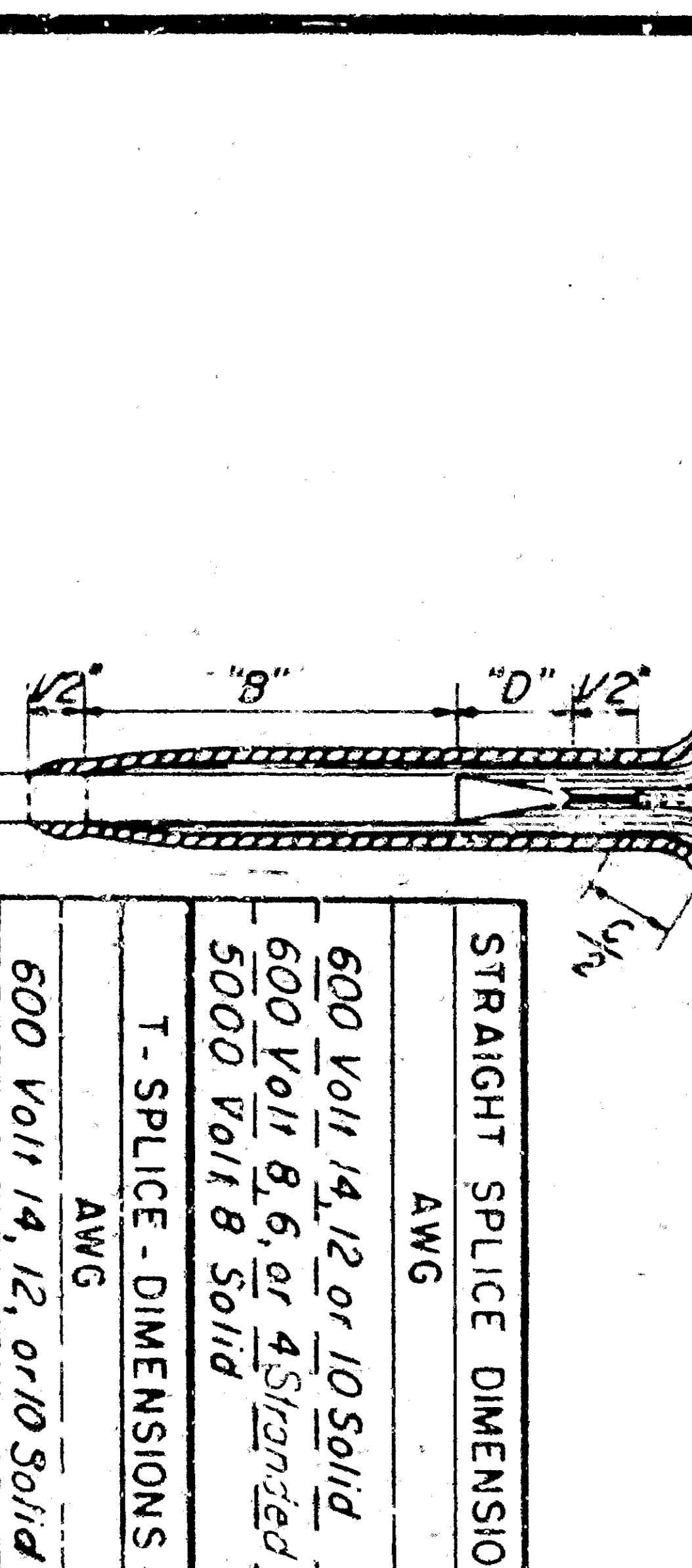
STATE OF CALIFORNIA
 DEPARTMENT OF PUBLIC WORKS
 DIVISION OF HIGHWAYS
STANDARD DETAILS NO. 3
 TRAFFIC SIGNAL AND
 HIGHWAY LIGHTING
 INSTALLATIONS

SCALE AS NOTED
 REV. DATE 6-7-59
 DRAWING NO. E



STRAIGHT SPLICE (600 V or 5000 V)

Use 4-wire pressure sleeve connector with branch removed.



ALTERNATE 600 VOLT "T" SPLICE ELECTRICAL SPRING CONNECTOR

PROCEDURE
 A Remove insulation from conductor for distance of Spacing distance.
 B Train conductors and screw right spring connector.
 C Insulation - (See Splice at left) use Method "X" unless otherwise specified.

STRAIGHT SPLICE DIMENSIONS - Inches

AWG	"B"	"C"	"D"
600 Volt 14, 12, or 10 Solid	2"	1 1/2"	1 1/2"
600 Volt 8, 6, or 4 Stranded	2 1/2"	1 1/2"	1 1/2"
5000 Volt 8 Solid	3 1/4"	1 1/2"	1 1/2"

T-SPLICE - DIMENSIONS - Inches

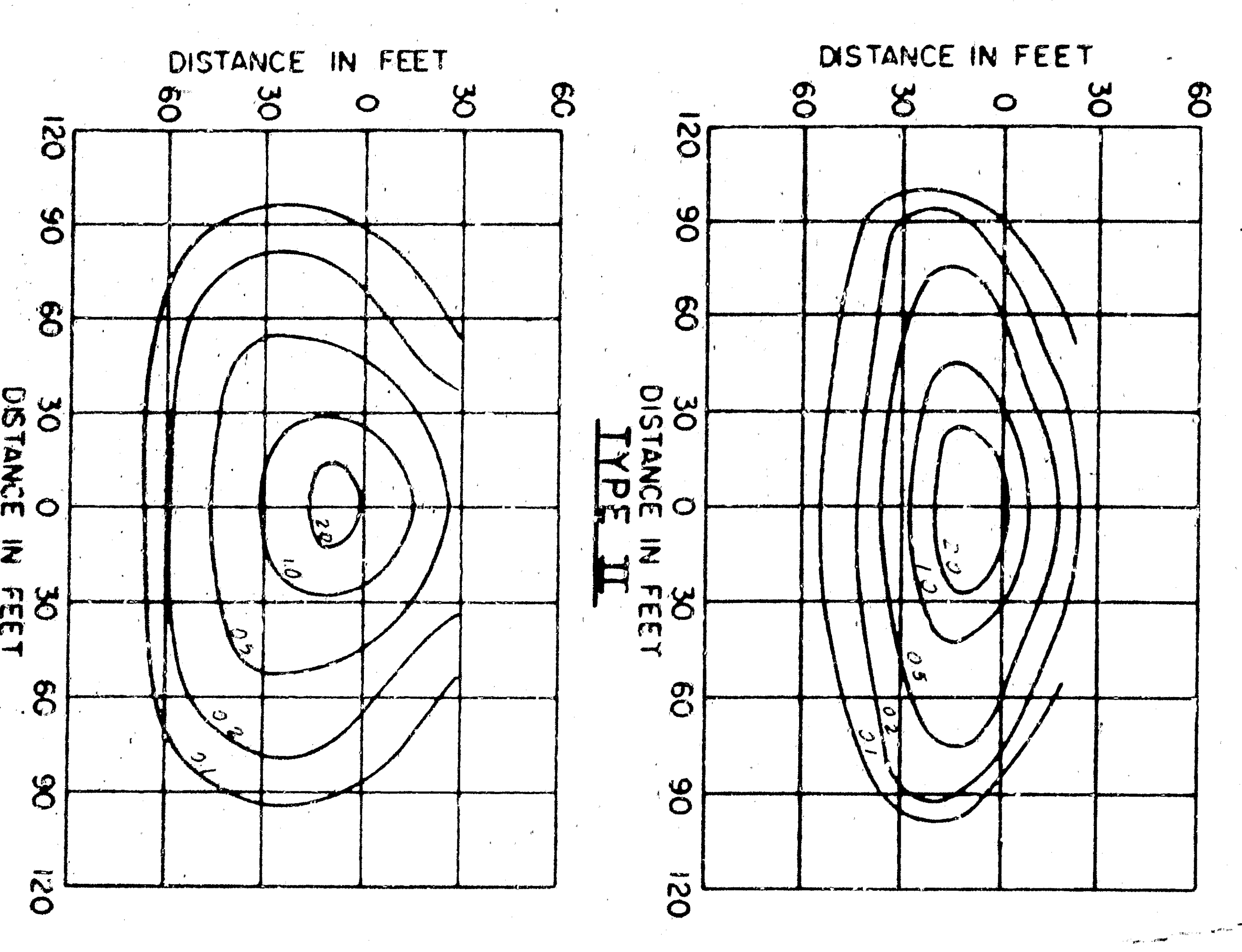
AWG	"B"	"C"	"D"
600 Volt 14, 12, or 10 Solid	2"	1 1/2"	1 1/2"

600 VOLT "T" SPLICE
(Up to 10 AWG only)

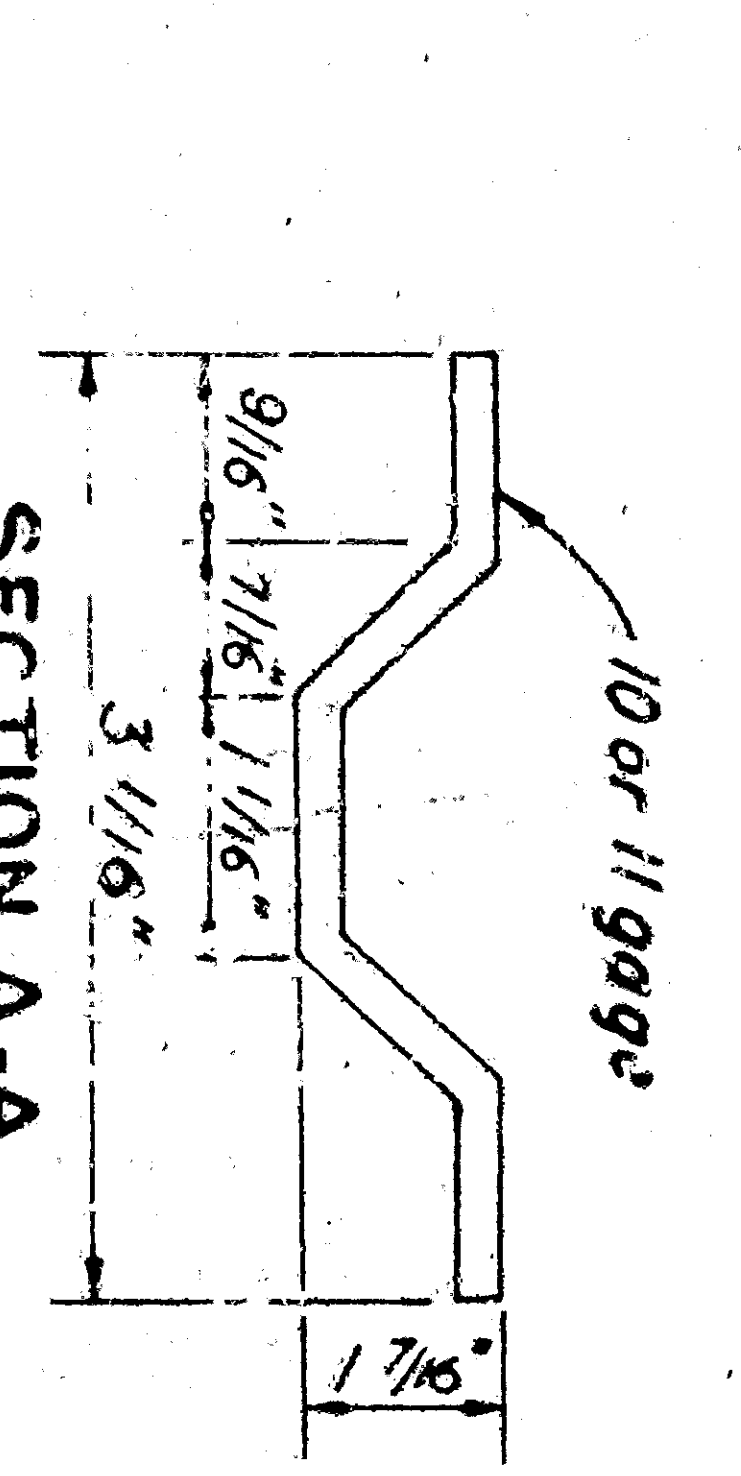
PROCEDURE
 A Remove insulation from each conductor to distance 1/2 C+1/2" and pencil to dimension D. Roughen pencil.
 B Train conductors and place connector, centering over burred cable ends.
 C Crimp and solder connector.
 D Insulate according to Method "A" unless otherwise specified.

- INSULATING METHOD "X"**
- Apply one coat of tape over rubber cement, allow to dry.
 - For Circuits Up to 2000 Volts
Apply self-healing synthetic rubber tape 1/2" thickness equal to original insulation.
 - For Circuits Above 2000 Volts 40 mils. minimum.
Apply self-healing synthetic rubber tape 1/2" thickness equal to original insulation.
 - Apply two layers of self-healing synthetic rubber tape, half lapped. Inner tapes shall be rolled, after application, with convex roller.
- INSULATING METHOD "B"**
- Apply two layers of self-healing synthetic rubber tape, half lapped. Apply self-healing synthetic rubber tape 1/2" thickness equal to original insulation.
 - Apply two layers of asphalt-impregnated green meshed fabric tape. Coat splice with same compound as in tape and use in.

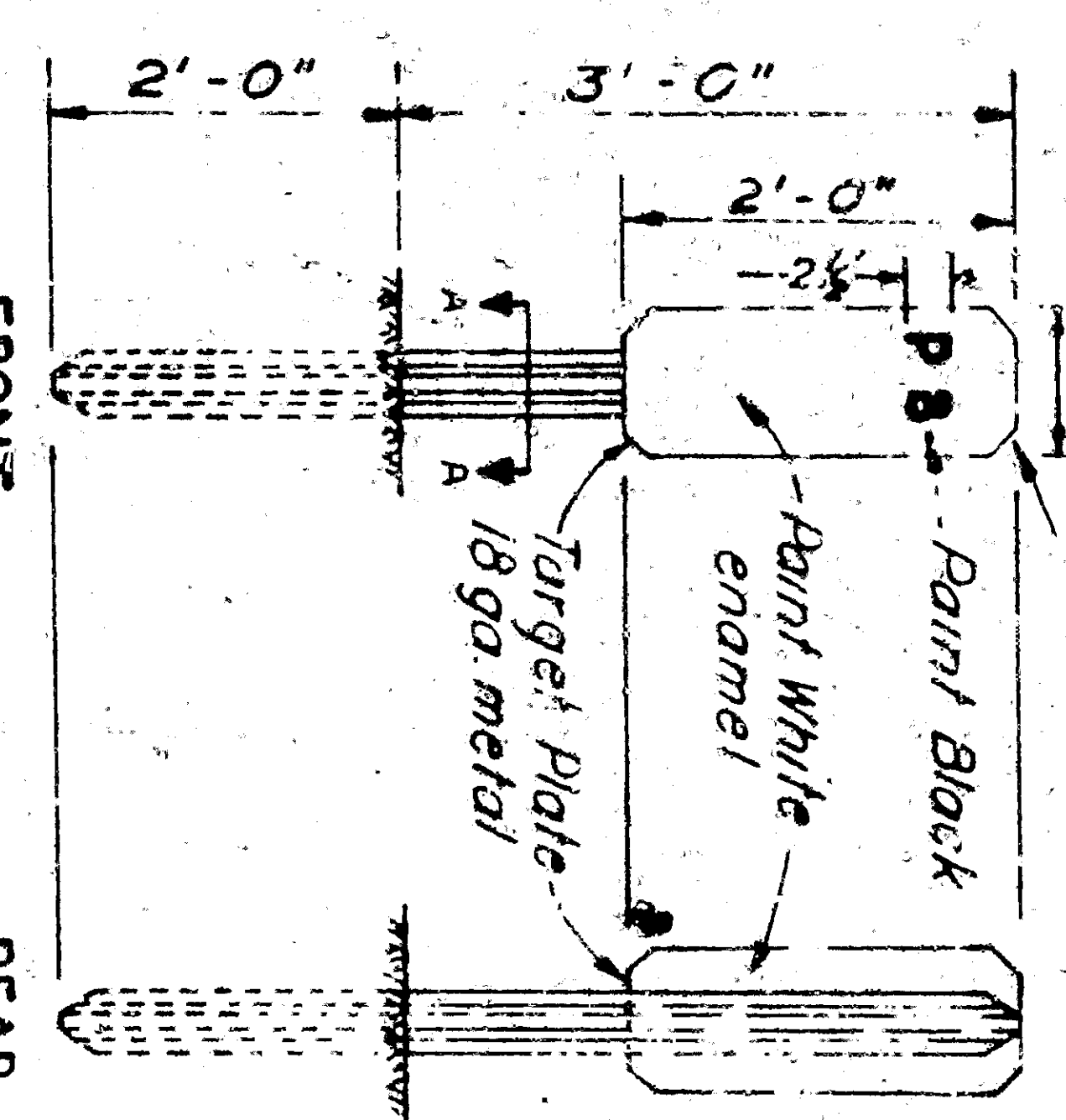
SPLICING DETAILS



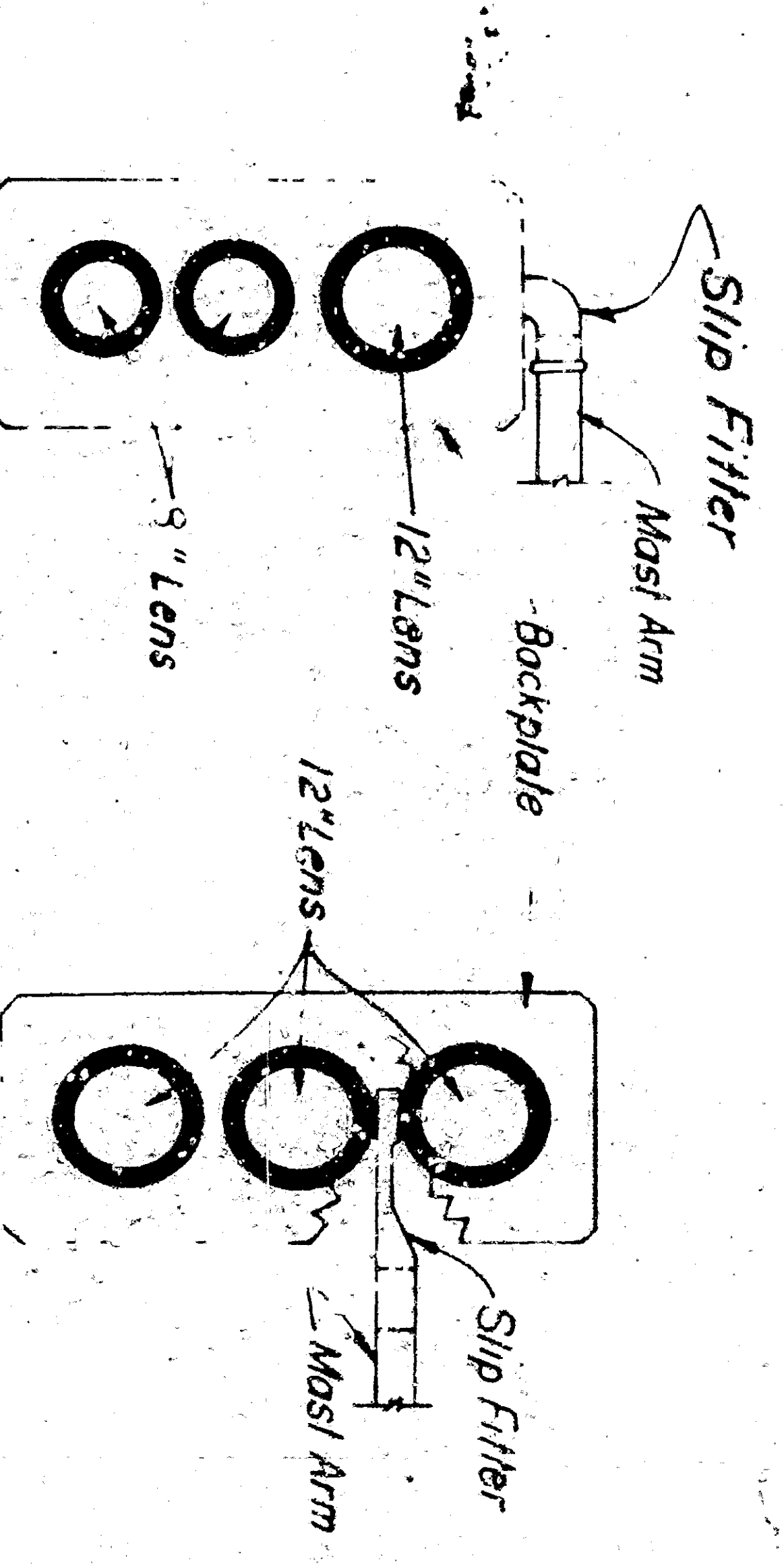
ISOLUX LINES OF MINIMUM HORIZONTAL FOOT CANDLES
 Shading Highway Lighting Luminaires 30' Mounting Height, 20000 lumens Mercury Vapor Lamp



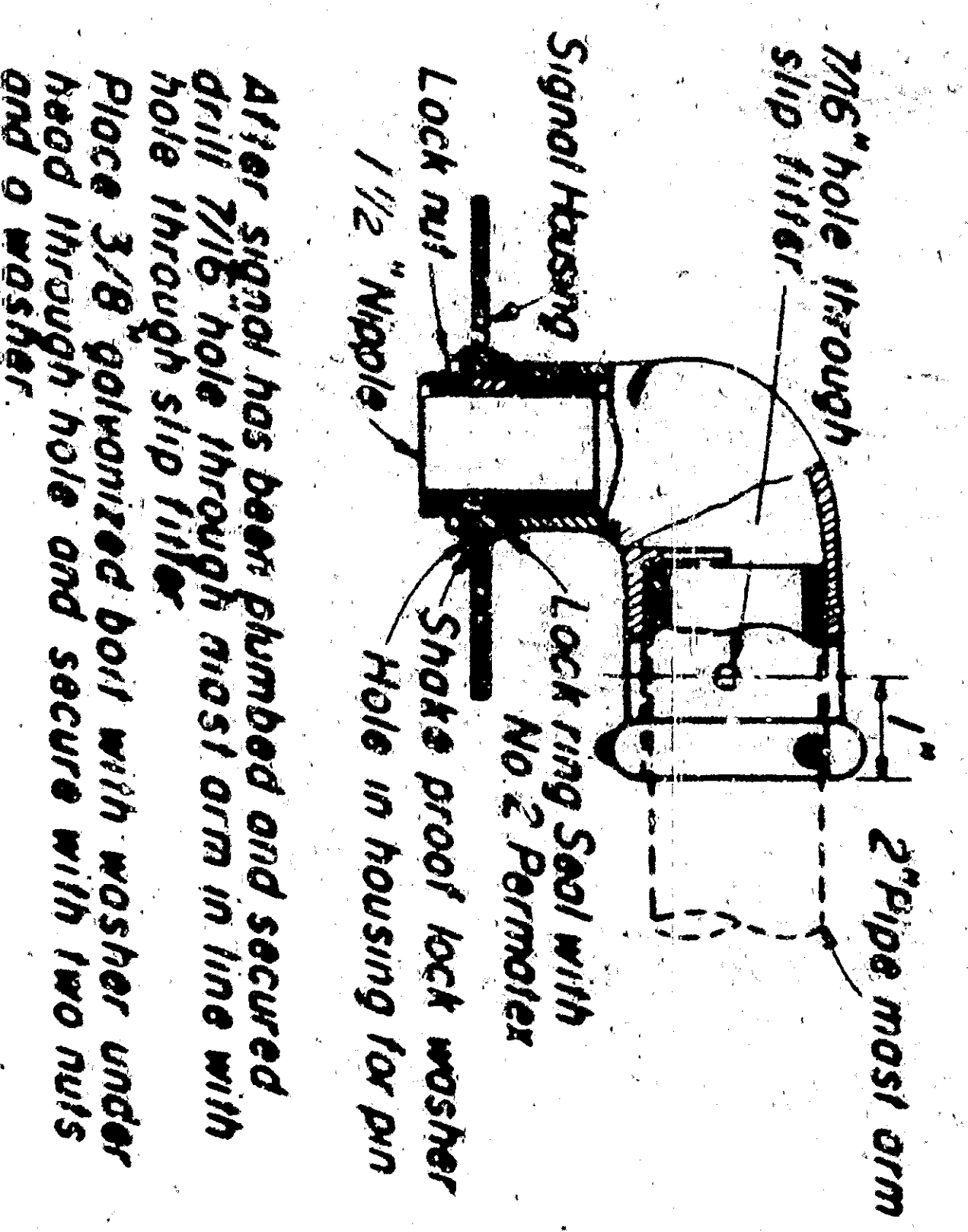
SECTION A-A



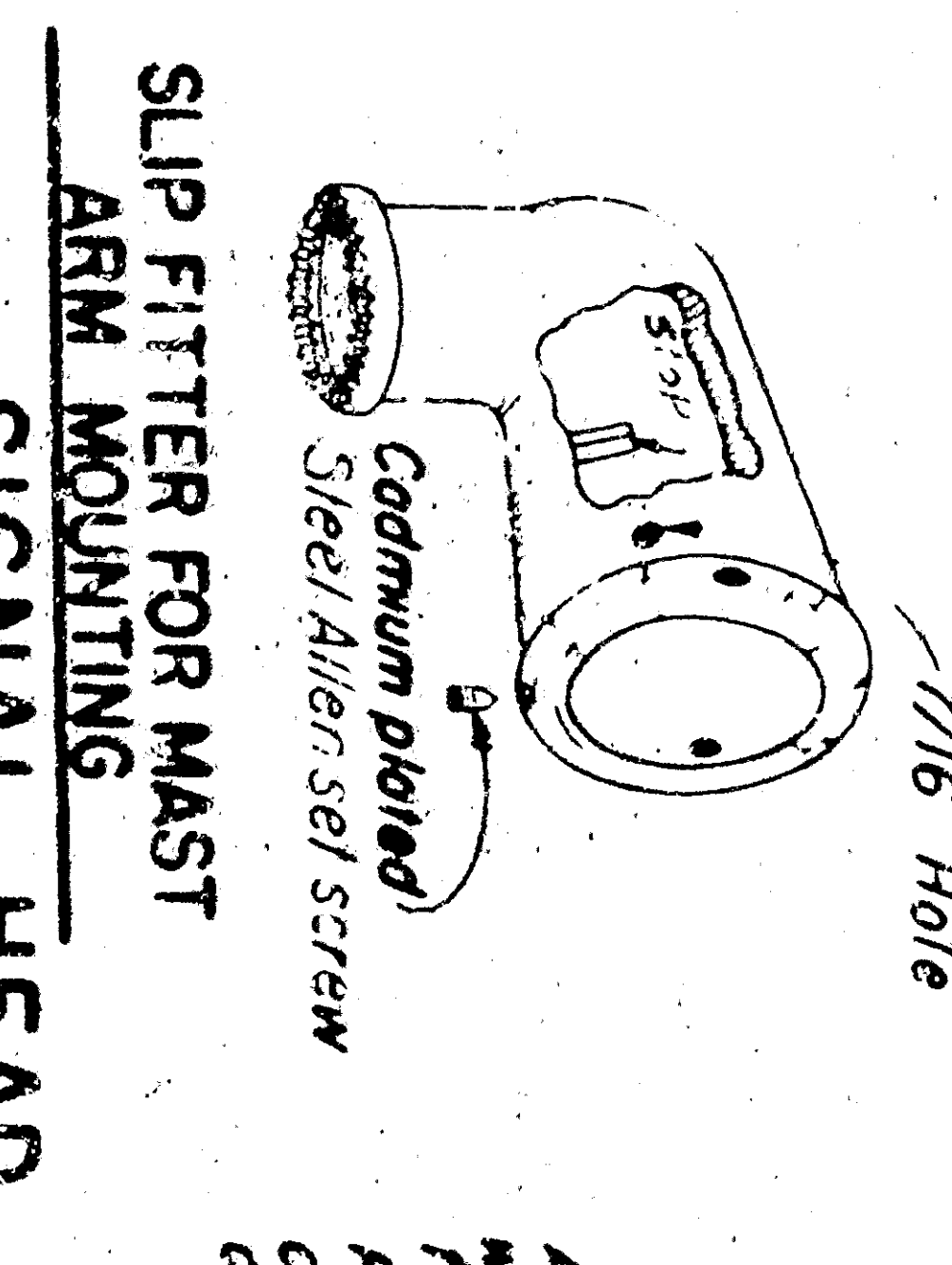
PULL BOX MARKER
 No Scale



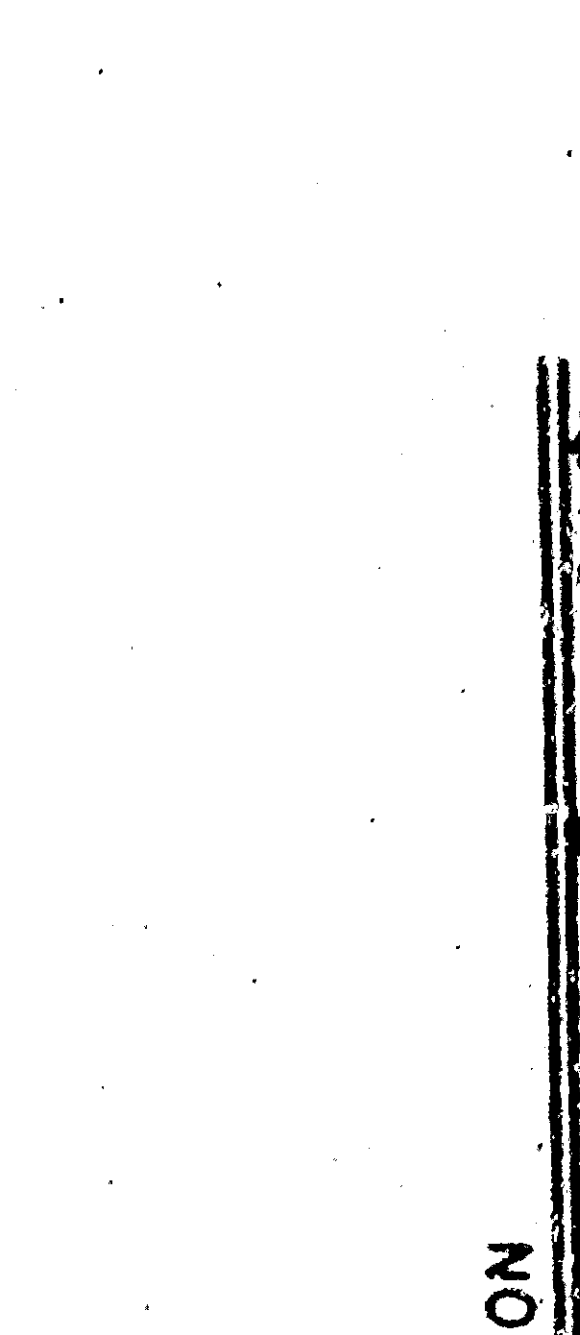
MAST ARM MOUNTINGS
 No Scale



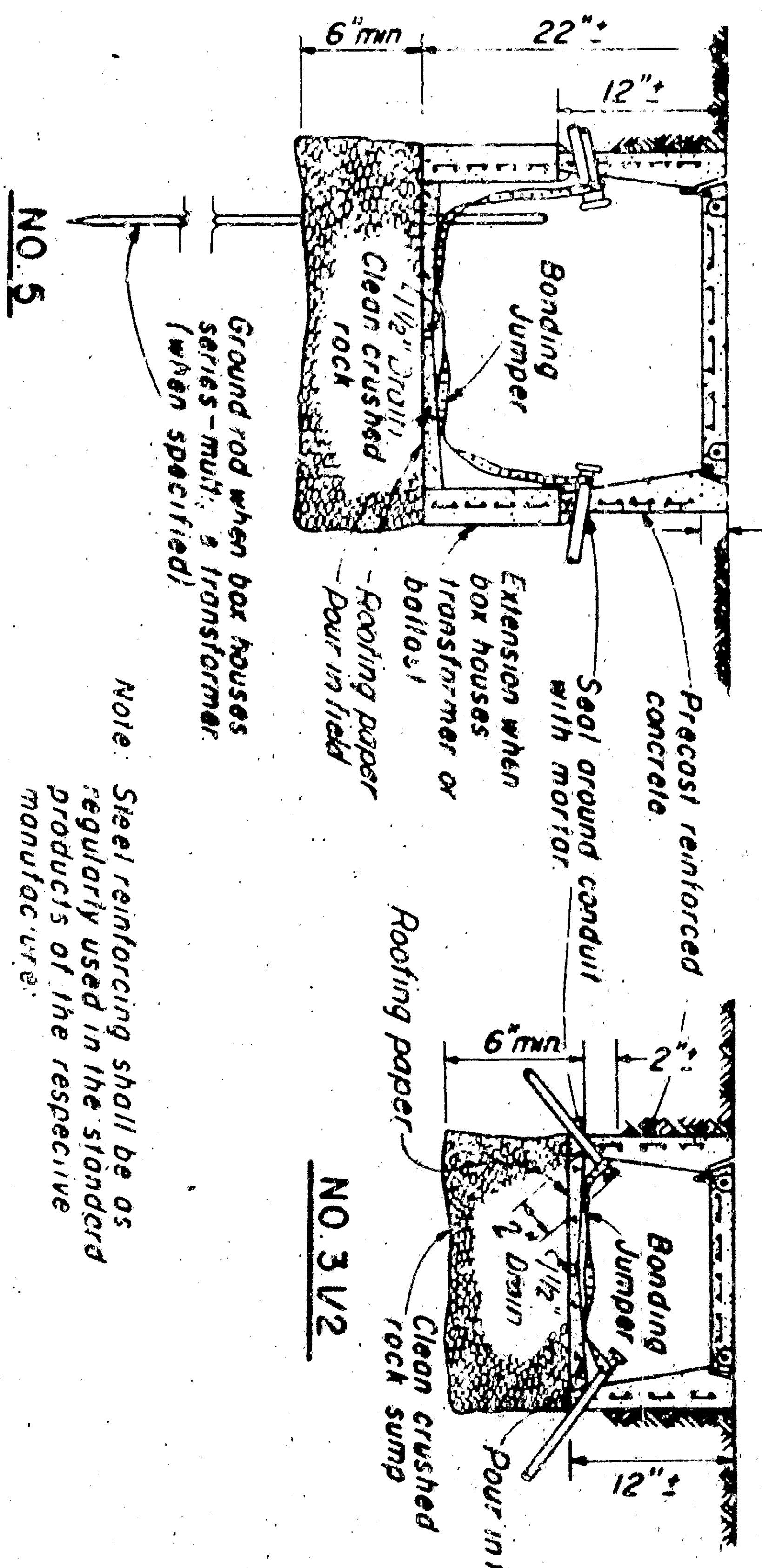
SLIP FILTER FOR MAST ARM MOUNTING



LOCK RING SIGNAL HEAD ATTACHMENT DETAILS
 No Scale



PULL BOXES
 No Scale



NO. 5

NO. 3 V2

NO. 5

STANDARD DETAILS NO. 3
 TRAFFIC SIGNAL AND HIGHWAY LIGHTING INSTALLATIONS

STATE OF CALIFORNIA
 DEPARTMENT OF PUBLIC WORKS
 DIVISION OF HIGHWAYS

SCALE AS NOTED
 REV. DATE 6-7-59
 DRAWING NO. E-127

APPROVED January 9, 1959

TO ACCOMPANY P.A.M. 5170

DATE	QUANTITY	ROUTE	SECTION	SHEET NO.	TOTAL SHEETS